



Sync to PanoBike App and other Apps with *Bluetooth*® Smart (BLE 4.0) connection program.

GB



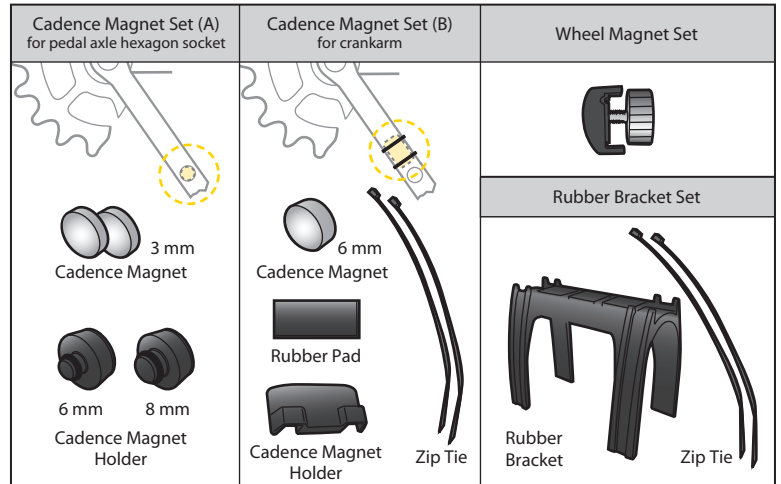
C Cadence Sensor Sensing Point



S Speed Sensor Sensing Point

SPECIFICATION

Tech: *Bluetooth*® Smart super low energy technology
 Battery Lifetime (approx): 1800 hours (5 years with 1hr/ day use)
 Battery: CR2032 x 1 pc (included)
 Transmission Range: <10 meter (33 ft)
 Waterproof: IPX 7
 Weight: 21g / 0.74 oz
 Operating temperature: -10°C ~ 50°C (14°F~122°F)

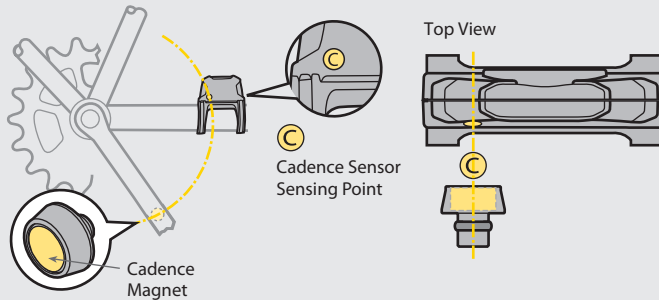
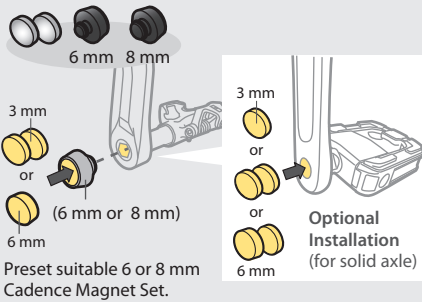


INSTALLATION

TIPS : Proper distance between Sensor and Magnet : < 25 mm

OPTION A

Cadence Magnet Set (A)

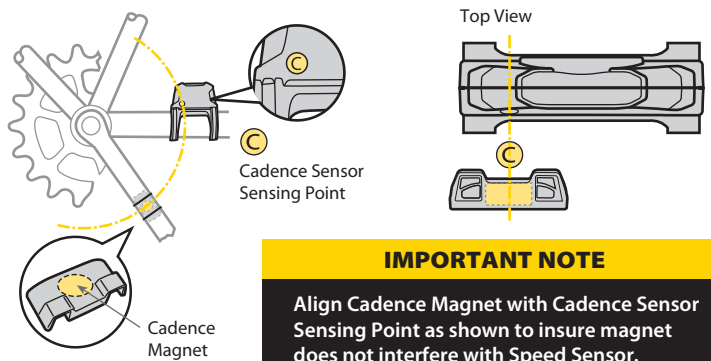
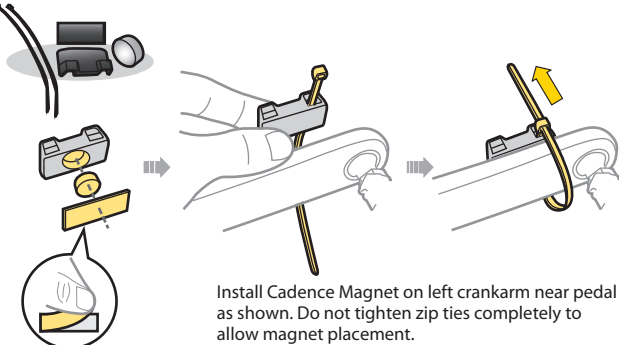


IMPORTANT NOTE

Align Cadence Magnet with Cadence Sensor Sensing Point as shown to insure magnet does not interfere with Speed Sensor.

OPTION B

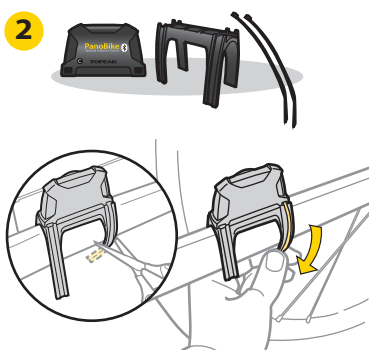
Cadence Magnet Set (B)



IMPORTANT NOTE

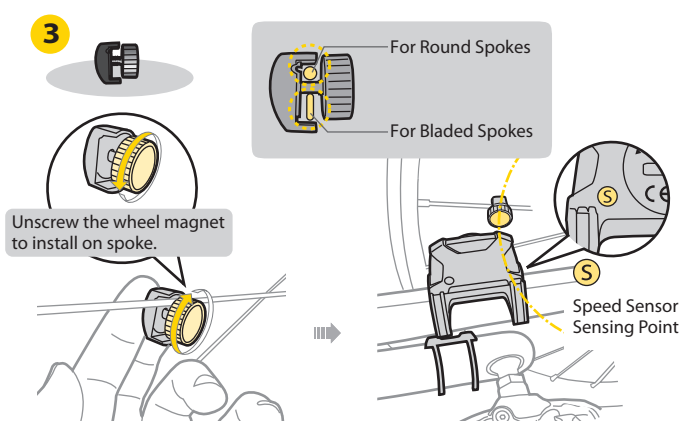
Align Cadence Magnet with Cadence Sensor Sensing Point as shown to insure magnet does not interfere with Speed Sensor.

2

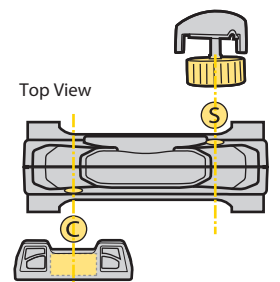


Pre-fit Sensor and Rubber Bracket on left rear chainstay (non-drive side) and trim excess rubber from bracket. Insure the Topeak logo is facing up. Install zip ties loosely to allow sensor placement.

3



Tighten the Wheel Magnet onto spoke and align with sensing point on sensor.

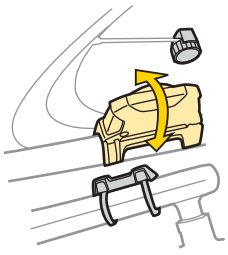


IMPORTANT NOTE

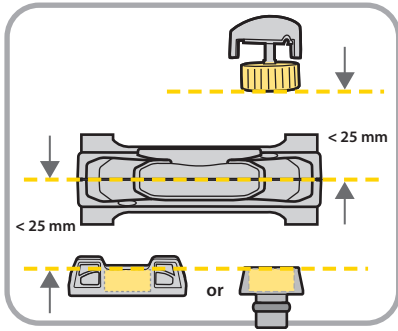
Align Wheel Magnet with Speed Sensor Sensing Point as shown to insure magnet does not interfere with Cadence Sensor.



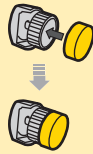
4



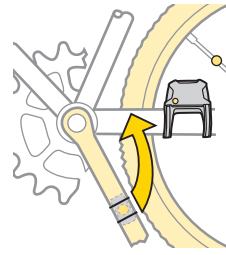
Adjust angle and position of sensor to achieve recommended magnet distances and aligning sensing points.



If after adjustment the wheel magnet does not meet the recommended distance, the extra cadence magnet may be added to the wheel magnet.



5 Pair with PanoBike App



Add a new device



Add a new device

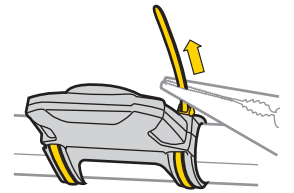


Pair with PanoBike App

Tap "Add a new device" and turn the crankarm counterclockwise several revolutions to make sure the Current Cadence (CAD) and Current Speed (SPD) connect correctly without interfering with each other. Input your name and wheel circumference and save all data. When "connected" appears, the pairing is successful. Tighten all zip ties and wheel magnet after successful pairing. Trim excess zip tie ends.

IMPORTANT NOTE

After pairing with PanoBike App successfully, make sure the Sensor is installed and tightened securely on left rear chainstay by using needle nose pliers before trimming excess zip tie.



TOPEAK PANOBKIE APP



The ultimate cycling performance app that utilizes your smartphone's powerful Bluetooth® Smart capabilities and transforms it into your bike computer, personal training and health management device. This app combines the functions of phone, cycle computer, GPS, music player, camera, and heart rate monitor (requires purchase of separate PanoBike Heart Rate Monitor) into one program that allows you to have loads of fun on your bike ride.

Sync to PanoBike App and other Apps with Bluetooth® Smart (BLE 4.0) connection program.



(Download for Free)



(Download for Free)

TROUBLE SHOOTING

1. Why can't I connect the sensor with PanoBike App?
 - Make sure the Bluetooth® system in your smartphone has been open.
 - Is the battery exhausted? Replace battery.
2. Display is slow?
 - Is the temperature below -10°C (14°F)? The unit will return normal state when the temperature rises.
3. No current speed or incorrect data?
 - Make sure the magnets are aligned to pass by the sensor as the crankarm and wheel spin.

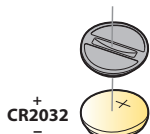
CAUTION

1. The Sensor and hardware can be used in the rain but should not be used underwater.
2. Do not disassemble the Sensor and hardware.
3. Check relative positions and gap between sensor and magnets periodically.
4. Do not use harsh chemicals to clean the Sensor and hardware.
5. Remember to pay attention to the road while riding.

CHANGING BATTERY

Operation Time up to **1800 hrs. / 5 yrs.**

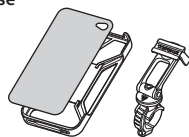
* 5 years with 1hr/ day use



NOTE: Install the sensor battery before first use.

RELEVANT ACCESSORIES

RideCase



Art No. TT9832B, TT9832W (works with iPhone 4/ 4S)
TT9833B, TT9833W (works with iPhone 5/ 5S)

PanoBike Heart Rate Monitor



Art No. TPB-HRM01

WARRANTY

2-year Warranty: All electronic and mechanical components against manufacturer defects only. Batteries are not covered under any implied warranty.

Warranty Claim Requirements

To obtain warranty service, you must have your original sales receipt. Items returned without a sales receipt will assume that the warranty begins on the date of manufacture. All warranties will be void if the product is damaged due to user crash, abuse, system alteration, modification, or used in any way not intended as described in this manual.

* The specifications and design are subject to change without notice.

Please contact your Topeak dealer with any questions.

For USA customer service call: 1-800-250-3068
www.topeak.com

Copyright © Topeak, Inc. 2013

* Bluetooth® is a registered trademark of Bluetooth SIG, Inc.
* iPhone is a registered trademark of Apple Inc.
* App Store is a service mark of Apple Inc.



M-TPB-CS01 GB 12/13